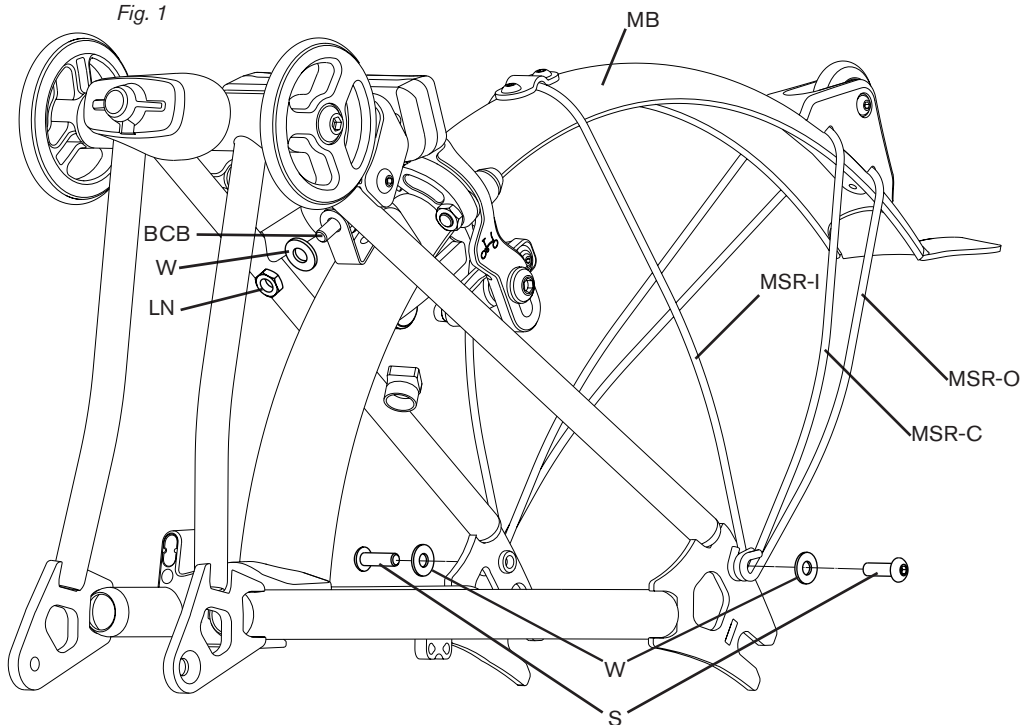


ADVANCE REAR MUDGUARD

IMPORTANT INFORMATION

- When replacing a mudguard, make a note of the order of assembly of washers and brackets on the brake bolt and ensure that the same washers are used in the same order on reassembly
- When fitting a mudguard where there was formerly no mudguard; if there is not enough space to fit the mudguard bracket, you may need to remove a washer from the stack
- It is vital that you follow the correct fitting procedure and tighten all fixings correctly; otherwise, the mudguard may interfere with rear wheel or the function of the brake caliper
- If you are unsure of the correct fitting process please consult your Brompton dealer or Brompton Customer Service support@brompton.co.uk.

Fig. 1



REMOVAL

It is advised that the wheel is removed when fitting or removing the mudguard.

To remove the mudguard, use a 3mm hex key to remove both mounting screws S holding the mudguard stays in place on the outside of the rear frame (fig. 2).

Unscrew the locking nut LN that holds the mudguard bracket MB on the rear brake caliper bolt BCB. (fig. 1). A 12mm spanner is required.

Guide the mudguard forward removing the MB from the BCB, once removed, the mudguard can be guided out through the caliper out through to the rear. **Please note**; there are separate nuts for the brake caliper, removal of the mudguard does not affect the brake caliper.

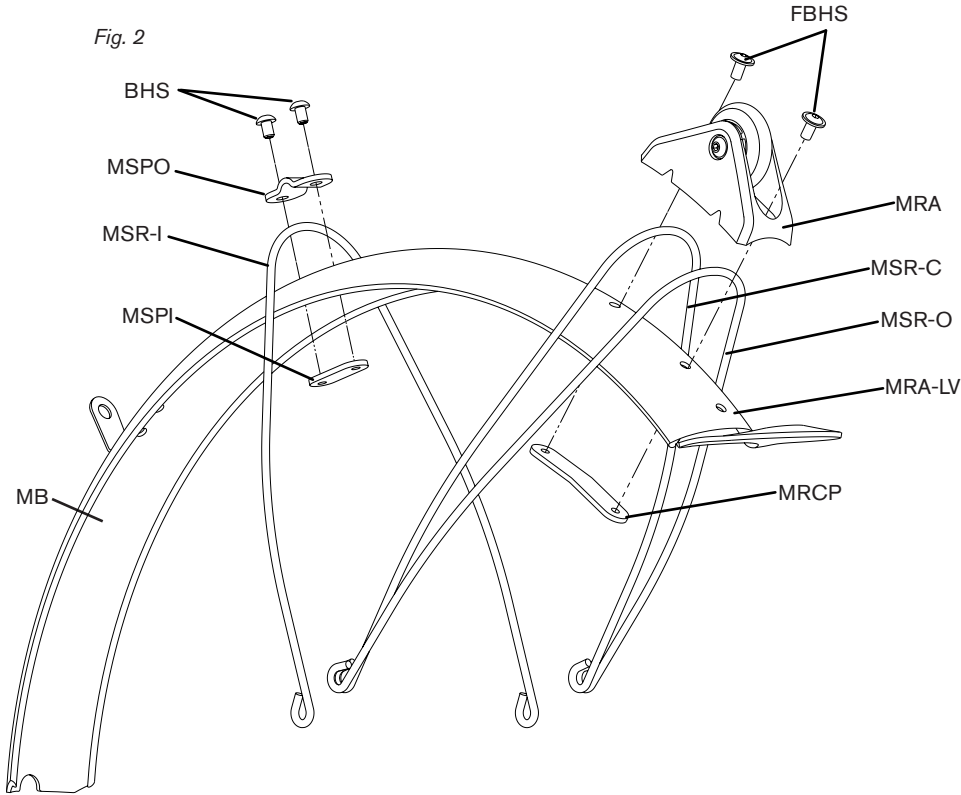
FITTING

To fit the rear mudguard, remove the rear wheel. If there were previously no mudguard fitted to the bike you may need to adjust the stack accordingly in order create space for the mudguard bracket.

The mudguard is independently secured on this model, which means that removing the rear brake caliper is not neccessary. The mudguard bracket is secured with a single locking nut.

You can remove the single locking nut LN along with the washer W if the mudguard is being fitted for the first time or if re-installing, the mudguard bracket MB can now be installed on the brake caliper bolt BCB (fig. 1), followed by the washer W and the locking nut LN, tightening the LN to 8Nm. Ensure that the mudguard is centered and not twisted before tightening the locking nut.

Insert both screws BHS to hold the mudguard stay MSR-I in place on the outside of the rear frame next to the dropout (fig. 2), tightening BHS to 2Nm.



ROLLER

To replace the mudguard roller assembly MRA, unscrew the Flanged button head screw FBHS; this will disassemble the two mudguard stays MSR-C and MSR-O, the MRA and the mudguard roller catch plate MRCP. When reattaching MRA, tighten FBHS to 2Nm.

MUDGUARD STAYS

In the case that the mudguard stays may need to be replaced, you can do so by unscrewing the relevant screws. This will allow the mudguard stays to be replaced.

